

CERTIFICATE OF LOCATION OF GOVERNMENT CORNER

NORTH QUARTER Corner of Section 4, Township 107 N, Range 40 W, 5th P.M.

STATE OF MINNESOTA, County of MURRAY

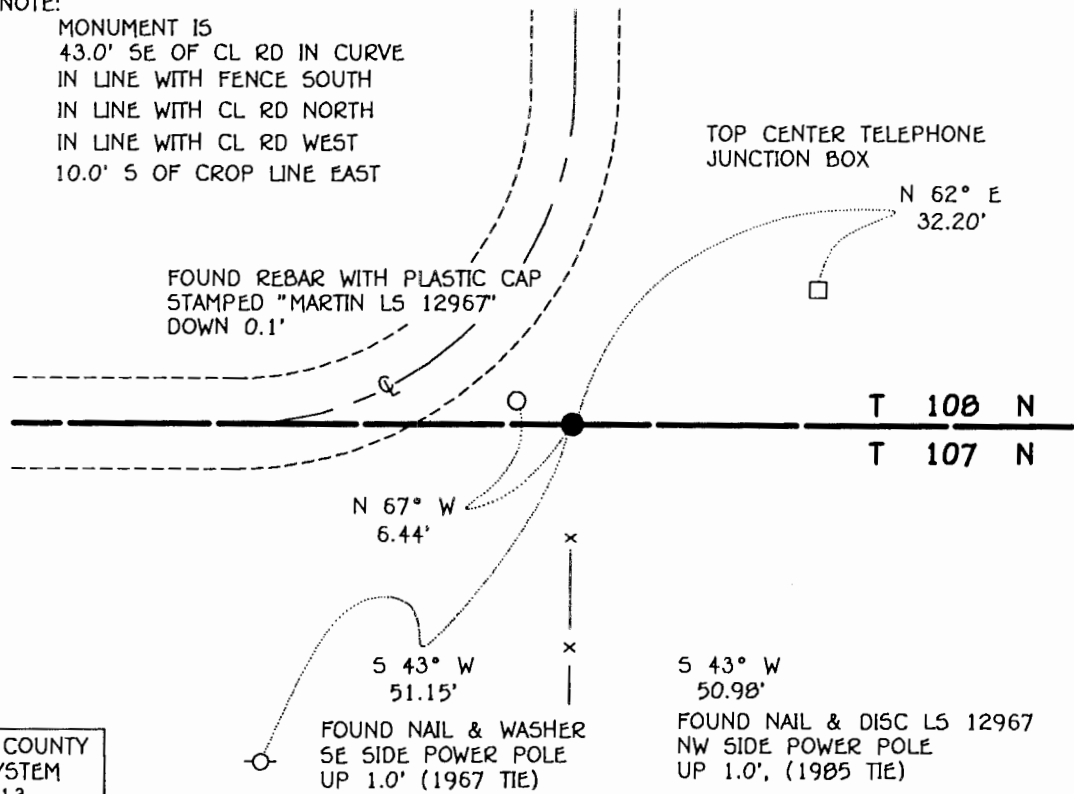
At the corner location shown on the sketch:

- On 7-2-97 found a 1" DIAMETER IRON PIPE, DOWN 0.2'
DATE
- left monument as found, lowered monument, removed monument (explain)
- On 7-2-97 Placed a 3/4" x 12" REBAR WITH ALUMINUM CAP STAMPED
DATE "DNR SURVEY MARKER" IN CENTER OF IRON PIPE

SKETCH OF REFERENCE TIES



NOTE:
 MONUMENT IS
 43.0' SE OF CL RD IN CURVE
 IN LINE WITH FENCE SOUTH
 IN LINE WITH CL RD NORTH
 IN LINE WITH CL RD WEST
 10.0' S OF CROP LINE EAST



1983 MURRAY COUNTY
 COORDINATE SYSTEM
 N = 195169.513
 E = 529735.342

BEARINGS OBSERVED WITH COMPASS

Statement of evidence relative to this corner location is on back of page.

JBM JUL '97
 WA501442

I hereby certify that this document and the data contained herein was prepared by me or under my direct supervision.

Bruce W. Sheppard 4/20/98
 SIGNATURE DATE

License Number 17003

- Land Surveyor, Professional Engineer
- County Surveyor, County Engineer

OFFICE OF THE COUNTY RECORDER
 County of MURRAY MAY 28 1998

I hereby certify that this document was filed in the Co. recorders office at _____ .M. on the _____ day of _____ A.D., 19____

County Recorder James V. Johnson
 By _____, Deputy

DOCUMENT NO. _____

The DNR Bureau of Engineering contacted the following for survey information:

Minnesota Secretary of State's Office
Murray County Recorder's Office
Murray County Highway Engineer's Office
Lyle Moseng Land Surveying of Marshall
Rieke Carroll Muller Associates of Gaylord
Madsen Land Surveying, Inc. of Fairmont

1861 U.S. General Land Office notes obtained from the Secretary of State's Office show the corner marked with a wood post and a charred stake in a mound of earth and sod with trench and pits as per instructions.

No Surveyor's Record Book A, page 12, obtained from the County Recorder's Office, contains a
Date survey, surveyor not indicated. Survey states that the Southeast Quarter of Section 4 was divided into the north and south halves. A description of what was found or set at the north quarter corner of Section 4 is not given and no distances are shown to it.

1967 April, DNR Bureau of Engineering contracted N.C. Hoium and Associates Inc. of Coon Rapids, Minnesota, to survey property in Lake Shetek State Park. The DNR Bureau of Engineering's records of survey show that corner was established on line between adjoining section corners and in line with the center line of a road north. A 1 inch diameter iron pipe was set to mark corner and the following ties were taken:

2645.38 feet from the northeast corner of Section 4
2660.55 feet from the northeast corner of Section 5
in line with the center line of road west
in line with a fence south
12.5 feet south of the westerly extension of a fence east
telephone pole, northeast, 27.2 feet
corner fence post with fences north and east, northeast, 34.97 feet
second fence post south of corner post, south 44.07 feet
corner fence post with fences south and west, south 36.5 feet
power pole #877, southwest, 51.23 feet
telephone pole, northwest, 57.75 feet

1985 January, a worksheet for a survey in the Northeast Quarter of Section 33 and field notes by Gary D. Martin, RLS #12967, obtained from Madsen Land Surveying, show that corner was established at the lost position. A ½ inch diameter rebar with a plastic cap was set to mark the corner and the following ties are shown to it:

2653.54 feet from the northeast corner of Section 4
2653.53 feet from the northeast corner of Section 5
6 feet west of the center line of road north
6 feet north of the center line of road west
brass tag in corner fence post, northeast, 40.30 feet
brass tag in telephone riser post, northeast, 31.22 feet
brass tag in power pole, southwest, 48.62 feet

1997 July 2, DNR Bureau of Engineering found the following in area of corner:

- 1) a rebar with a plastic cap stamped "MARTIN RLS 12967"
- 2) a 1 inch diameter iron pipe:
 - a) in line with the center line of road north
 - b) in line with the center line of road west
 - c) in line with a fence south
 - d) 2647.35 feet from the northeast corner of Section 4
 - e) 2663.26 feet from the northeast corner of Section 5
 - f) 6.44 feet, southwest from the found rebar

Computed the lost position for corner and found it to be:

- 1) 2.64 feet south and 2.04 feet west of the found rebar
- 2) 0.10 of a foot south and 7.95 feet west of the found iron pipe

Analysis of the above information led the DNR Bureau of Engineering to conclude that the found iron pipe which was set in 1967 on line between adjoining section corners and in line with the center line of a road north marks the obliterated location of the corner. Do not accept the found rebar as the location of corner because it was established from an incorrect location for the northeast corner of Section 5. Searched for and found record ties as shown on sketch of reference ties.